

MONTHLY MEMBERSHIP PROGRESS REPORT

District 325 G

Results as of: 4/30/2024

GMT:

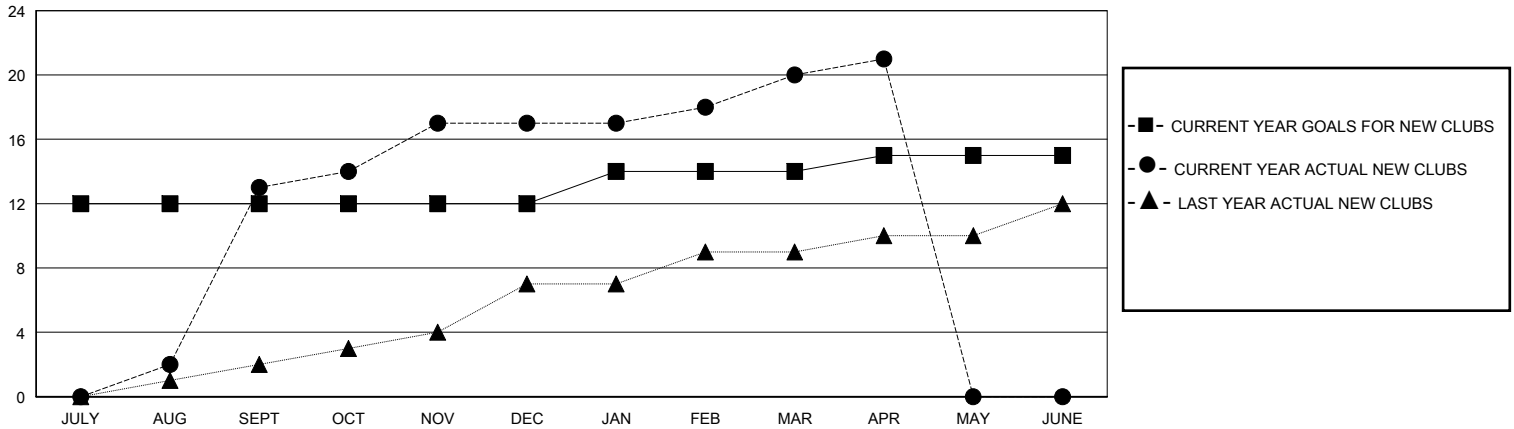
LOCATION NEPAL

GMT CA

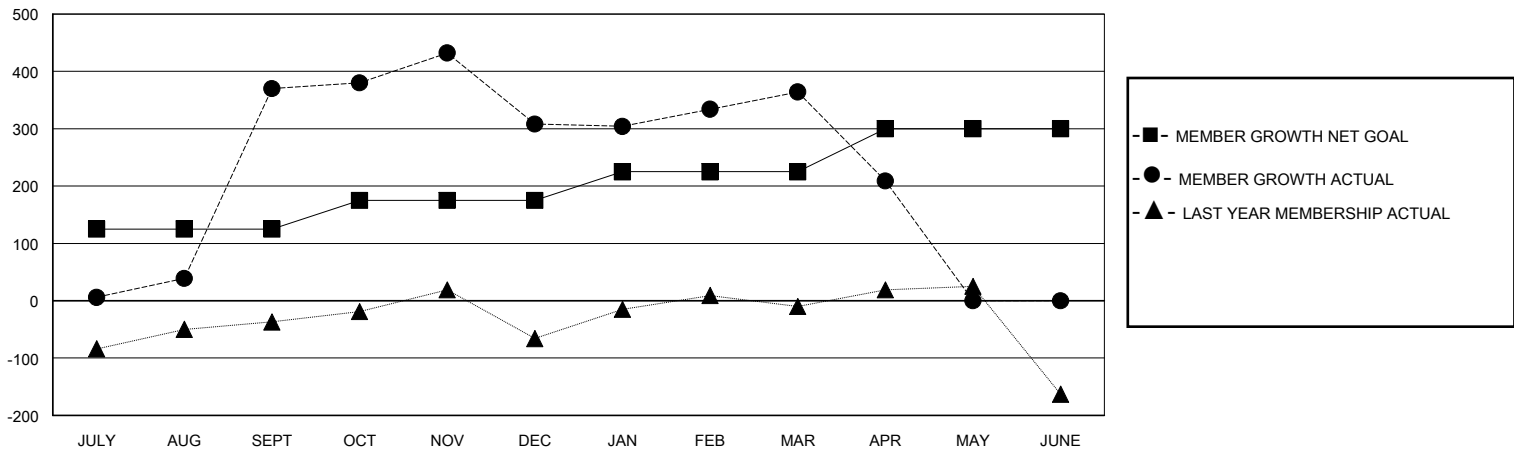
Clubs			
RESULTS FOR 2023-2024			
QUARTER	NEW CLUB GOAL	NEW CLUBS	DROPPED CLUBS
JULY/AUG/SEPT	12	13	4
OCT/NOV/DEC	0	4	8
JAN/FEB/MAR	2	3	3
APR/MAY/JUNE	1	1	3

Members			
RESULTS FOR 2023-2024			
QUARTER	MEMBER GROWTH NET GOAL	MEMBER GROWTH ACTUAL	DROPPED MEMBERS ACTUAL (including transfers)
JULY/AUG/SEPT	125	605	176
OCT/NOV/DEC	50	297	354
JAN/FEB/MAR	50	225	115
APR/MAY/JUNE	75	21	119

GOALS AND ACTUAL NEW CLUBS CUMULATIVE



GOALS AND ACTUAL MEMBERS CUMULATIVE



DROPPED CLUBS: 16	92 CLUBS OF 143 ADDED 1 OR MORE NEW MEMBERS	<u>GENDER DISTRIBUTION</u>	
<u>DROPPED MEMBERS</u>		MALE	2,060 (66.20%)
DECEASED	2	FEMALE	1,050 (33.74%)
CLUB CANCELLED	325	TOTAL FAMILY UNIT MEMBERS 2,045	
OTHER	437		
TOTAL	764	FAMILY MEMBERS PAYING HALF DUES 1,447	
CLICK HERE FOR CUMULATIVE MEMBERSHIP DATA			